

BARANA

“Breeding Cattle for the Commercially Minded since 1980”

24TH ANNUAL ON PROPERTY BULL SALE

Friday July 5, 2024 | 1pm



18 SIMMENTAL BULLS

9 SIMMENTAL FEMALES

13 ANGUS BULLS

15 PUREBRED COMMERCIAL FEMALES

‘Barana’ Coolah NSW & livestreamed via  AuctionsPlus

www.baranasimmentals.com



Performance

Carcase

Softness



WELCOME

Welcome to Barana's 24th Annual On-Farm Bull Sale

Stud principal, Peter Cook has worked hard for over 40 years breeding Simmentals that reinforce Barana's long held reputation with both commercial & stud cattle producers. We have sold bulls nationwide and secured a solid client base over many decades. We are a 'hands on' family business. We live & work on our farm so we understand the challenges our clients face because we are exposed to those same challenges. We extend our sincere thanks to our valued clients for their continued & solid support.

This year's Barana sale will be conducted on farm and livestreamed via AuctionsPlus.

We aim to offer 31 predominantly polled bulls at our 2024 sale; 18 Simmental & 13 Angus. Of this year's Barana sale draft, the majority are soft, early maturing, middle-of-the-road type bulls. This style of bull will introduce cattle into your herd that will eat less, have the ability to finish with a higher yield & put more dollars in your pocket. Use purebred Simmental bulls to gain the advantages of hybrid vigour for added performance, weight gain, carcase, fertility, softness & longevity. The females to be offered exhibit the superior maternal traits for which traditional Simmentals are renowned. It is rewarding to see Barana pedigrees in successful stud programmes and Barana genetics breeding on for our clients.

Sale bulls have been run on pasture improved country & later fed a supplementary ration of wheaten hay & a light grain mix.

Bulls will present in good, strong condition on sale day. Barana bulls are not overdone on feed as we value longevity in the bulls we breed & no foot trimming has been performed on any of the cattle presented.

As in past sales, objective data will be available for each bull & all inspections & guarantees will be provided. All bulls must pass stringent veterinary tests for breeding & soundness. These bulls will be semen tested, including morphology, Breedplan recorded and scanned for EMA, FAT & IMF. Barana maintains a Level 7 J-BAS [Johnes Beef Assurance Score] status.

Each bull in this catalogue has been tested to show that they are not a BVDV Persistently

Infected (PI) animal. All sale bulls have been vaccinated against BVDV with Pestigard®, against Leptospirosis with Ultravac® 7in1 and Vibriosis with Vibrovax®. All sale bulls have been given 2 vaccinations of each product to ensure they have full immunity which is valid for 12 months. This is your assurance that we have taken all available steps to protect our animals against introducing disease into your herd and to ensure their continued performance. We recommend that you continue with annual vaccination to help protect the health of your herd and maximise the productivity of your business. All Barana bulls have also been vaccinated against 3-day sickness & tick fever [3-germ blood] to suit our Queensland clients.

Free cartage will be offered to bull buyers within a 300 km radius of Barana and for interstate bull buyers, free cartage along the major route from Coolah to Goondiwindi & from Coolah to Wodonga. Queensland bull buyers will also be offered free cartage to Roma. Conditions apply. Please contact Peter Cook to enquire.

The sale is interfaced with AuctionsPlus & will be conducted live online in real time.

The catalogue will be available for preview on our website www.baranasimmentals.com. You can also follow us on Facebook, Twitter & Instagram.

Barana Simmentals offer quality, guarantees, reputation, performance & results. We look forward to seeing you on sale day or to arrange inspection prior to the sale please contact Peter Cook or the selling agents.

STUD HISTORY

Barana Simmentals was founded by Stud Principal, Peter Cook in 1980 on traditional European and New Zealand bloodlines. Peter has worked hard for over 44 years through good & bad seasons to secure Barana's long held reputation with both commercial & stud cattle producers around Australia.

Peter began showing at major Royal Shows in 1986, securing many Champion awards and earning a name for breeding good, sound, functional cattle. He ceased showing cattle in 2001 after 15 years exhibiting & achieving success at all major shows.

Barana has a stud herd including 200 registered & commercial breeders. Great importance is placed on breeding for ease of calving, milk production & fertility and females must be able to rear a calf under natural conditions. Barana has endeavoured to breed bulls that produce steers that are quick growing with good carcass characteristics and the ability to finish. We have enjoyed success in the Australian National Field Days Grass-fed Steer and the RAS NSW Feedlot JapOx Competitions & the Scone Beef Bonanza where we secured the Champion Purebred Carcass with a total point score of 90.867.

Barana bulls get results with clients reporting Simmental Cross Vealers straight off their mothers consistently dressing out at 58% & outdoing other breeds in weight for age. Barana clients have succeeded in gaining a rare Championship/Reserve double in the heavyweight division steer carcass judging at Brisbane Royal with a Simmental Cross Steer sire by a Barana bull. Our clients have topped the annual Bindaree Beef Weaner Sale with a pen of Simmental Cross Steers & won best pen of Euro or Euro Cross Steers in the competition section. Barana clients have topped the Casino Weaner & Grower Sale with 10-11 month old Simmental Cross Weaner Steers consecutively and secured top pen of Euro bred steers at the sale. Our bull buyers report that the introduction of Simmental bulls in their herd has significantly lifted weights in the weaner steers they turn off.

Peter purchased Karewa Jester, a polled son of German sire Eizenherz from New Zealand in 2000. This bull bred well in Barana's polling programme. German genetics were utilised with Zimbo and Gowrie Yankee [P] producing excellent progeny. We introduced South African bred bulls into our Barana herd with Bullock Hills Buster [P] and Corinda Downs Buckshot [AI] [ET] [P] in 2007.

Callendale Jasper [P] and Woonallee Jumbo have produced low birthweight, easy calving, early maturing offspring. We purchased the homozygous polled Woonallee Looking Glass in 2017.

In February 2020 Barana purchased a new outcross stud sire Willandra Panama [P] from the Cowcher family's Willandra Simmental stud in WA followed up with the purchase of Willandra Qantastic [P] in 2021.

Barana Lindel [PP] our homozygous polled bull has bred some outstanding progeny.

Barana genetics have been ongoing proven performers for us & our clients over many decades earning champion awards in both the show ring & carcass competitions. The benefits of reliable Barana breeding are evident.

Here at Barana we pride ourselves in producing consistent quality & value for money over the past four decades. We hope to continue with the pleasing results achieved in the past at our 24th Annual On-Farm Sale.



AuctionsPlus

How to Register and Bid on AuctionsPlus

1

Go to www.auctionsplus.com.au to register at least 48 hours before the sale.

7

Fill in buyer details and once completed go back to Dashboard.

2

Select "Sign Up" in the top right hand corner.

8

Complete buyer induction module (approx. 30 minutes).

3

Fill out your name, mobile number, email address and create a password.

9

AuctionsPlus will email you to let you know that your account has been approved.

4

Go to your emails and confirm the account.

10

Log in on sale day and connect to auction.

5

Return to AuctionsPlus and log in.

11

Bid using the two-step process – unlock the bid button and bid at that price.

6

Select "Dashboard" and then select "Request Approval to Buy".

12

If you are successful, the selling agent will contact you post sale to organise delivery and payment.

For more information please contact us on:

Phone: (02) 9262 4222

Email: info@auctionsplus.com.au

SALE INFORMATION

Location

Barana is located 14km north of Coolah, NSW, on the Black Stump Way. Refer to map on inside back cover.

Inspection

Bulls can be inspected from 9am on the day of the sale or pre-sale by appointment. Inspections can be arranged through Peter Cook on 0427 775 233 or the selling agents.

Rebate

Selling agents are Elders and Davidson Cameron & Co with 2% rebate to outside agents introducing their clients at least 24 hours prior to the sale and settling within 7 days. The agent must attend the sale with the client or on the client's behalf. The rebate will not be paid outside these conditions.

Phone Bidding

Please contact the selling agents 24 hours prior to the sale to arrange phone bidding.

No Verbal Instructions

Please complete a buyer's instruction sheet available on sale day from the agents ensuring your phone number is provided. To assist us with delivery of your bull please draw up a map of your property or delivery point indicating nearest roads, towns or prominent landmarks and include your contact phone number.

AuctionsPlus

The sale is interfaced with AuctionsPlus & will be conducted live online in real time. For those not able to attend the sale, new users must register 24 hours prior to the sale to bid.

GST

All lots are sold GST exclusive i.e. if the bull is knocked down for \$5,000 you will be charged \$5,500.

Insurance

There is no vendor insurance on sale bulls. It is the responsibility of the buyers to insure their purchases.

Luncheon

Complimentary lunch will be supplied.

SALE INFORMATION

Transport

NEW SOUTH WALES BULL BUYERS will be offered free cartage within a 300 km radius of Barana. INTERSTATE BULL BUYERS will be offered free cartage along the major route from Coolah to Goondiwindi and from Coolah to Wodonga. QUEENSLAND BULL BUYERS will also be offered free cartage to Roma. Conditions Apply. Please contact Peter Cook to enquire.

Please note that free cartage does not apply to any female lots offered for sale.

All care will be taken but no responsibility will be accepted for lots waiting for delivery or during delivery. Formal possession, risk & expense passes to the buyer at the fall of the hammer.

Selling Agents

ELDERS

Gunnedah Nik Hannaford 0417 201 460
Tamworth Brian Kennedy 0427 844 047
Dubbo Paul Jameson 0428 667 998
Gunnedah Hugh Shannon 0437 885 032
Gunnedah John Glover 0428 486 887

DAVIDSON CAMERON & CO

Luke Scicluna 0428 421 82
Paul Banks 0427 922 700
Tom Tanner 0448 462 177

AUCTIONEER

Paul Dooley 0458 662 646

CONDITIONS FOR SALE BY AUCTION IN NEW SOUTH WALES WILL APPLY

Disclaimer

Barana Pastoral, the selling agents, officers, agents & employees, while exercising due care, provide all information without responsibility and do not warrant its accuracy. They also accept no responsibility or liability for accidents that occur on or about the venue. Any person attending the Barana Simmental Sale Venue does so at their own risk.

VETERINARY NOTES

General Health

All cattle are TB & Brucellosis free. All bulls in this catalogue have been tested to show they are not a BVDV Persistently Infected [PI] animal. All sale bulls have been vaccinated against BVDV with Pestigard, against Leptospirosis with Ultravac 7in1 and Vibriosis with Vibrovax. All sale bulls have been given two vaccinations of each product to ensure they have full immunity which is valid for 12 months. All bulls have been vaccinated against 3-day sickness & tick fever [3-germ blood] to suit our Queensland clients.

Barana maintains a Level 7 J-BAS [Johnes Beef Assurance Score] status.

The Barana Sale Bull Breeding Soundness Evaluation

The sale bulls have been subjected to a number of strict assessments by our Vet to ensure they will be physically and reproductively sound.

Structural Soundness Examination

All animals have been closely examined paying particular attention to the following: feet, legs, back, jaws, teeth & walking ability. They have been deemed to be within normal parameters.

Semen Examination

Just prior to the sale all bulls have been electro-ejaculated. At this time, the testes have been palpated and measured. The external genitalia are thoroughly examined, and a gross and microscopic assessment of the semen is made including morphology. This suite of tests is very comprehensive. We have carried out these assessments to ensure that the bull performs satisfactorily.

Carcase Information

Scan measurements and daily weight gain figures will be available on sale day.

CONDITIONS FOR SALE BY AUCTION IN NEW SOUTH WALES WILL APPLY

BARANA'S TOP PRICE 2023



TOP PRICE BULL

BARANA STEADMAN [P] PTCPS028

Purchased by Ivan Price, Kedstock Pty Ltd, Charleville, QLD for \$16,000

Sire : Barana Lindel

Dam : Barana Melody M035



TOP PRICE FEMALE

BARANA THELMA [P] PTCPT039

Purchased by J & M Hannah, Glenanna Simmentals, NSW for \$6,000

Sire : Willandra Panama

Dam : Barana Matilda

2024 REFERENCE SIRES



Willandra Panama AJYPP164 [P]

Sire **TOPWEIGHT JACK ARTA (P)** Woonallee Flamboyant (P)
 Dam **WILLANDRA OLIVE B70 (H)** MAJ ROBO (AI)
 Topweight Bettina 333 (P) Quaindering Olive V19 (H)

	CE	BW	WW	YW	Milk	MCE	MWWT	STAY	DOC	CW	REA	FAT	MARB
EPD	6.8	3.4	65.9	87.1	20.7	3.3	53.7	15.1	8.9	15.6	0.84	-0.111	-0.09
ACC	0.45	0.46	0.48	0.5	0.18	0.22	0.28	0.3	0.1	0.35	0.32	0.32	0.42
PRK	30	15	75	85	90	60	90	30	50	75	35	45	50



Willandra Qantastic AYPQ094 [P]

Sire **WEEPJ092 WOONALLEE JERICHO (P)** WEEPC120 Woonallee BHR Tornado (P)
 Dam **AJYPG116 WILLANDRA EVITA G116 (H)** Unavailable
 WEEPC087 Woonallee Vasti C87 (H)(ET)(AI) AJYPE105 Willandra Evita E105 (H)

	CE	BW	WW	YW	Milk	MCE	MWWT	STAY	DOC	CW	REA	FAT	MARB
EPD	-0.7	8.7	95	142.4	34.4	-0.8	81.9	10.4	9.1	32	1.02	-0.108	-0.14
ACC	0.42	0.55	0.52	0.53	0.35	0.2	0.41	0.26	0.14	0.29	0.23	0.29	0.33
PRK	100	100	2	1	10	100	1	90	45	10	10	35	70

2024 REFERENCE SIRES



Pentire Rome R22

Sire **HF ALCATRAZ 60F PV** MAY-WAY BREAKOUT 1310
 Dam **PENTIRE PRIDE H36Y SV** S A V PIONEER 7301
 HF MAYFLOWER 191Z PV Pentire Pide F35

	Calving Ease DIR [%]	Calving Ease DTRS [%]	Birth Wt. [kg]	200 Day Wt [kg]	400 Day Wt [kg]	600 Day Wt [kg]	Milk [kg]	Scrotal Size [cm]	Carcase Wt [kg]	Eye Muscle Area [sq cm]	Rib Fat [mm]	Rump Fat [mm]	Retail Beef Yield [%]	IMF [%]
EBV	3.6	4.7	4.9	58	99	133	19	1.9	75	9.1	-1.7	-2.6	1.4	1
Acc	65%	52%	82%	83%	81%	81%	73%	79%	70%	69%	69%	70%	61%	73%

LOT 1

BARANA UNREGISTERED [P]

A/c: BARANA PASTORAL

DOB 18/09/2022 **Eye Pigment** 100/100
Tattoo PTCP T095 **Age** 21

Colour Light Red

Comment:
 Stands on good bone. Strong sirey head. Excellent length & muscle development. Showing very good carcass characteristics.



Sire WILLANDRA PANAMA AJYPP164 [P] **Dam** PTCQ040

Purchaser: **Price:**

LOT 2

BARANA UNREGISTERED [P]

A/c: BARANA PASTORAL

DOB 18/07/2022 **Eye Pigment** 100/100
Tattoo PTCP T051 **Age** 23

Colour Red

Comment:
 Bull displaying excellent length & muscle development. Early-mid maturing muscle pattern.



Sire WILLANDRA QANTASTIC AJYPQ094 [P] **Dam** PTCPN013

Purchaser: **Price:**

LOT 3

BARANA TRENT T085 [P]

A/c: BARANA PASTORAL

DOB 20/08/2022 **Eye Pigment** 100/100
Tattoo PTCP T085 **Age** 22

Colour Dark Tan

Comment:
 Thickset, soft, early maturing bull showing tremendous depth of body. Stands wide behind. Soft, silky skin.



	CE	BW	WW	YW	Milk	MCE	MWWT	STAY	DOC	CW	REA	FAT	MARB
EPD	7.7	4	64.2	84.6	27.2	5.9	59.3	11.6	7.7	25	1.03	-0.12	-0.07
ACC	0.33	0.38	0.42	0.41	0.15	0.14	0.24	0.27	0.05	0.33	0.3	0.28	0.32
PRK	20	20	85	90	50	20	70	75	70	30	5	70	45

WOONALLEE FLAMBOYANT WEEPF009
 TOPWEIGHT JACK ARTA TOPPJ133
 TOPWEIGHT BETTINA 333 TOPPB048
Sire WILLANDRA PANAMA AJYPP164 **Dam** BARANA N016 PTCN016
 MAJ ROBO SDMPX039+02
 WILLANDRA OLIVE B70 AJYPB070
 QUAINDERING OLIVE V19 AJYPV019+00

CHAMPS BRAVO IMCPD060
 WOONALLEE JUMBO WEEPJ065
 WOONALLEE KATHIE G73 WEEPG073
BARANA N016 PTCN016
 BULLOCKHILLS BUSTER ERPPB011
 BARANA FOOTSCRAY PTCPF051
 BARANA VALERIAN PTCPV056+00

Purchaser: **Price:**

LOT 4

BARANA TULLY [S]

A/c: BARANA PASTORAL

DOB 10/08/2022 **Eye Pigment** 100/100
Tattoo PTCP T082 **Age** 22

Colour Light Red

Comment:
 Deep barrelled, thickset, well muscled bull.



	CE	BW	WW	YW	Milk	MCE	MWWT	STAY	DOC	CW	REA	FAT	MARB
EPD	6.4	4.3	72.7	93.3	24.6	5	61	14.2	7.7	13.7	0.76	-0.119	-0.25
ACC	0.34	0.37	0.4	0.38	0.18	0.14	0.25	0.26	0.05	0.32	0.31	0.27	0.32
PRK	35	20	45	75	65	30	60	45	70	80	55	70	95

WOONALLEE FLAMBOYANT WEEPF009
 TOPWEIGHT JACK ARTA TOPPJ133
 TOPWEIGHT BETTINA 333 TOPPB048
Sire WILLANDRA PANAMA AJYPP164 **Dam** BARANA NELLIE PTCN042
 MAJ ROBO SDMPX039+02
 WILLANDRA OLIVE B70 AJYPB070
 QUAINDERING OLIVE V19 AJYPV019+00

CHAMPS BRAVO IMCPD060
 WOONALLEE JUMBO WEEPJ065
 WOONALLEE KATHIE G73 WEEPG073
BARANA NELLIE PTCN042
 BULLOCKHILLS BUSTER ERPPB011
 BARANA ELLISON PTCPE201
 BARANA WINDFLOWER PTCPW045+00

Purchaser: **Price:**

LOT 5**BARANA TANNER [P]**
A/c: BARANA PASTORAL

DOB 13/07/2022 **Eye Pigment** 100/100
Tattoo PTCP T042 **Age** 23
Colour Dark Tan
Comment:
 Compact bull with an early maturing muscle pattern.



	CE	BW	WW	YW	Milk	MCE	MWWT	STAY	DOC	CW	REA	FAT	MARB
EPD	3.1	7.1	81.9	113.8	27.5	3	68.5	11.6	9	9.3	0.61	-0.1	-0.41
ACC	0.34	0.36	0.41	0.39	0.27	0.15	0.32	0.25	0.05	0.31	0.32	0.27	0.33
PRK	80	85	15	20	45	65	25	75	50	95	90	20	100

WOONALLEE FLAMBOYANT WEEPF009
 TOPWEIGHT JACK ARTA TOPPJ133
 TOPWEIGHT BETTINA 333 TOPPB048
Sire **WILLANDRA PANAMA AJYPP164**
 MAJ ROBO SDMPX039+02
 WILLANDRA OLIVE B70 AJYPB070
 QUAINDERING OLIVE V19 AJYPV019+00

WILLANDRA GOMEZ AJYPG041
 WOONALLEE LOOKING GLASS WEEPL105
 WOONALLEE VASTI G52 WEEPG052
Dam **BARANA REBECCA R001 PTCPR001**
 BULLOCKHILLS BUSTER ERPPB011
 BARANA EVATT PTCPE165
 BARANA BROOK PTCPB055

Purchaser:**Price:****LOT 6****BARANA UNREGISTERED [P]**
A/c: BARANA PASTORAL

DOB 26/06/2022 **Eye Pigment** 100/100
Tattoo PTCP T028 **Age** 24
Colour Dark Red
Comment:
 Bull displaying excellent length & muscle development.

**Sire** **WILLANDRA QANTASTIC AJYPQ094 [P]****Dam** **PTCPM007****Purchaser:****Price:****LOT 7****BARANA TRISTAR [P]**
A/c: BARANA PASTORAL

DOB 20/10/2022 **Eye Pigment** 100/100
Tattoo PTCP T114 **Age** 20
Colour Red
Comment:
 Deep, thickset, early maturing bull with good carcass characteristics. Soft, fine skin.



	CE	BW	WW	YW	Milk	MCE	MWWT	STAY	DOC	CW	REA	FAT	MARB
EPD	1.8	6.5	83.9	118.4	30.8	2.4	72.8	12.1	7.8	28.8	0.9	-0.116	-0.12
ACC	0.34	0.43	0.43	0.45	0.15	0.14	0.24	0.25	0.05	0.31	0.3	0.27	0.29
PRK	90	70	15	15	25	75	10	70	65	15	20	60	60

WOONALLEE BHR TORNADO WEEPC120
 WOONALLEE JERICO WEEPJ092
 WOONALLEE VASTI C87 WEEPC087
Sire **WILLANDRA QANTASTIC AJYPQ094**
 WILLANDRA EVITA G116 AJYPG116
 WILLANDRA EVITA E105 AJYPE105

WOONALLEE JUMBO WEEPJ065
 BARANA MUHAMMAD PTCPM072
 BARANA ELDERSLIE PTCPE148
Dam **BARANA PASADENA PTCPP050**
 WOONALLEE JUMBO WEEPJ065
 BARANA MAYA PTCPM066
 BARANA FOREVER PTCPF045

Purchaser:**Price:****LOT 8****BARANA UNREGISTERED [P]**
A/c: BARANA PASTORAL

DOB 06/10/2022 **Eye Pigment** 100/100
Tattoo PTCP T109 **Age** 20
Colour Red
Comment:
 Bull with a good sirey outlook. Tremendous length of body. Soft, fine skin.

**Sire** **WILLANDRA PANAMA AJYPP164 [P]****Dam** **PTCPG059****Purchaser:****Price:**

LOT 9

BARANA TEXAL [PP]
A/c: BARANA PASTORAL

DOB 06/10/2022 **Eye Pigment** 100/100
Tattoo PTCP T108 **Age** 20

Colour Light Red

Comment:
Thickset, early maturing bull showing good carcass characteristics.



	CE	BW	WW	YW	Milk	MCE	MWWT	STAY	DOC	CW	REA	FAT	MARB
EPD	6.9	7.3	78.9	116.7	23.5	6.2	63	13.6	8.7	9.1	0.61	-0.115	-0.15
ACC	0.34	0.41	0.37	0.36	0.16	0.15	0.23	0.26	0.04	0.31	0.32	0.28	0.31
PRK	30	85	25	15	75	15	50	50	55	95	90	60	75

WOONALLEE FLAMBOYANT WEEPF009
TOPWEIGHT JACK ARTA TOPPJ133
TOPWEIGHT BETTINA 333 TOPPB048
Sire **WILLANDRA PANAMA AJYPP164** **Dam**
MAJ ROBO SDMPX039+02
WILLANDRA OLIVE B70 AJYPB070
QUAINDERING OLIVE V19 AJYPV019+00

CORINDADOWNS BUCKSHOT CDPPB035
BARANA EMOTION PTCPE059
BARANA XIT PTCPX105+02
BARANA HALLA PTCPH017
BARANA YARDLEY PTCPY061+03
BARANA BONNIE PTCPB043
TENNYSONVALE XANDRA BXNPX009+02

Purchaser:

Price:

LOT 10

BARANA TYPHOON [PP]
A/c: BARANA PASTORAL

DOB 22/07/2022 **Eye Pigment** 100/100
Tattoo PTCP T057 **Age** 23

Colour Dark Red

Comment:
Thickset bull, early maturity muscle pattern.



	CE	BW	WW	YW	Milk	MCE	MWWT	STAY	DOC	CW	REA	FAT	MARB
EPD	5.1	4.2	71.8	100.3	31.7	3.8	67.6	11.7	9.7	23.6	0.95	-0.129	-0.25
ACC	0.35	0.44	0.34	0.39	0.19	0.16	0.24	0.26	0.15	0.32	0.31	0.27	0.32
PRK	50	20	50	55	20	50	25	75	40	35	15	90	95

FGAF SELDOM 835L PEDPX1368
FGAF GUERRERO 810Y IMCPG810
NOSSATERRA REAL WISH 69U PEDPX1931
Sire **WORMBETE ROMEO R8 AGOPR008** **Dam**
WOONALLEE LAS VEGAS WEEPL128
WORMBETE BELLE P182 AGOPP182
WORMBETE BELLE H55 AGOPH055

WILLANDRA GOMEZ AJYPG041
WOONALLEE LOOKING GLASS WEEPL105
WOONALLEE VASTI G52 WEEPG052
BARANA RONA R022 PTCPR022
BULLOCKHILLS BUSTER ERPPB011
BARANA GOSSIP GIRL PTCPG221
COOLAH VAL GJWPV015+00

Purchaser:

Price:

LOT 11

BARANA TRAVIS T11 SV
A/c: Barana Pastoral

DOB 07/07/2022 **Colour** Black
Tattoo JXE22T11 **Age** 23

Comment:
Tremendous, deep barrelled, thickset bull with very strong carcass characteristics. Stands wide behind.



	Calving Ease DIR [%]	Calving Ease DTRS [%]	Birth Wt. [kg]	200 Day Wt [kg]	400 Day Wt [kg]	600 Day Wt [kg]	Milk [kg]	Scrotal Size [cm]	Carcass Wt [kg]	Eye Muscle Area [sq cm]	Rib Fat [mm]	Rump Fat [mm]	Retail Beef Yield [%]	IMF [%]
EBV	6.4	7	3.1	54	98	129	14	2.2	79	12.4	-0.3	-0.5	1.2	0.9
Acc	61%	51%	80%	81%	79%	79%	70%	77%	66%	66%	66%	67%	57%	71%

MAY-WAY BREAKOUT 1310CAN1838287
HF ALCATRAZ 60FCAN2043806 PV
HF MAYFLOWER 191ZCAN1683163 PV
Sire **PENTIRE ROME R22NQDR22 PV**
S A V PIONEER 7301USA15688392
PENTIRE PRIDE H36NQDH36 SV
PENTIRE PRIDE F35NQDF35

CONNEALY CAPITALIST 028 USA16752262
LD CAPITALIST 316USA17666102 PV
LD DIXIE ERICA 2053 USA14407230
Dam **BARANA JEDDA 3RD P009JXEP009 SV**
THE GRANGE WHEEL WRIGHT D6 EFTD6 PV
KANSAS JEDDA F191NKL191
KANSAS JEDDA Y108 NKLY108

Purchaser:

Price:

LOT 12

BARANA TOWNSEND T2 SV
A/c: Barana Pastoral

DOB 13/06/2022 **Colour** Black
Tattoo JXE22T2 **Age** 24

Comment:
Bull with excellent length of body. Very strong topline. Thickset bull.



	Calving Ease DIR [%]	Calving Ease DTRS [%]	Birth Wt. [kg]	200 Day Wt [kg]	400 Day Wt [kg]	600 Day Wt [kg]	Milk [kg]	Scrotal Size [cm]	Carcass Wt [kg]	Eye Muscle Area [sq cm]	Rib Fat [mm]	Rump Fat [mm]	Retail Beef Yield [%]	IMF [%]
EBV	2.5	-2.7	5.5	56	100	138	18	0.7	76	10.7	-3.3	-3.9	1.6	1.7
Acc	61%	50%	80%	81%	79%	80%	71%	77%	68%	67%	67%	68%	58%	72%

MAY-WAY BREAKOUT 1310CAN1838287
HF ALCATRAZ 60FCAN2043806 PV
HF MAYFLOWER 191ZCAN1683163 PV
Sire **PENTIRE ROME R22NQDR22 PV**
S A V PIONEER 7301USA15688392
PENTIRE PRIDE H36NQDH36 SV
PENTIRE PRIDE F35NQDF35

DUNOON EVIDENT E614 BHRE614 PV
KANSAS EVIDENTLY J81NKLJ81 SV
KANSAS ANNIE E109 NKLE109E
Dam **BARANA RITA M002JXEM002**
WK REPLAY USA16154968
KANSAS RITA G225NKL225
KANSAS RITA T172 NKLZ172 DV

Purchaser:

Price:

LOT 13

BARANA TEMPLETON T1 SV

A/c: Barana Pastoral

DOB 13/06/2022 **Colour** Black
Tattoo JXE22T1 **Age** 24



Comment:
 Bull with tremendous capacity & length of body.

	Calving Ease DIR [%]	Calving Ease DTRS [%]	Birth Wt. [kg]	200 Day Wt [kg]	400 Day Wt [kg]	600 Day Wt [kg]	Milk [kg]	Scrotal Size [cm]	Carcase Wt [kg]	Eye Muscle Area [sq cm]	Rib Fat [mm]	Rump Fat [mm]	Retail Beef Yield [%]	IMF [%]
EBV	6.8	5.1	4.1	51	87	123	22	3.1	70	10.5	-0.4	-0.8	0.9	2.5
Acc	60%	49%	80%	81%	78%	79%	70%	76%	66%	66%	66%	67%	56%	71%

MAY-WAY BREAKOUT 1310CAN1838287
 HF ALCATRAZ 60FCAN2043806 PV
 HF MAYFLOWER 191ZCAN1683163 PV
Sire **PENTIRE ROME R22NQDR22 PV**
 S A V PIONEER 7301USA15688392
 PENTIRE PRIDE H36NQDH36 SV
 PENTIRE PRIDE F35NQDF35

ASCOT HALLMARK H147 QQFH147 PV
 DALWHINNIE M70AGQM70 SV
 MILLAH MURRAH BRENDA F6 NMMF6 PV
Dam **BARANA RITA Q001JXEQ001**
 KANSAS EVIDENTLY J81 NKLJ81 SV
 BARANA RITA M002JXEM002
 KANSAS RITA G225 NKLJG225

Purchaser: **Price:**

LOT 14

BARANA THORPE T7 SV

A/c: Barana Pastoral

DOB 27/06/2022 **Colour** Black
Tattoo JXE22T7 **Age** 24



Comment:
 Silky soft skin. Once again, has that tremendous depth of barrel & excellent length.

	Calving Ease DIR [%]	Calving Ease DTRS [%]	Birth Wt. [kg]	200 Day Wt [kg]	400 Day Wt [kg]	600 Day Wt [kg]	Milk [kg]	Scrotal Size [cm]	Carcase Wt [kg]	Eye Muscle Area [sq cm]	Rib Fat [mm]	Rump Fat [mm]	Retail Beef Yield [%]	IMF [%]
EBV	-4.2	0	9.4	71	117	161	16	2.7	99	9.9	-7.5	-9.6	2.9	-0.8
Acc	62%	52%	80%	82%	79%	80%	72%	77%	68%	67%	67%	68%	58%	72%

MAY-WAY BREAKOUT 1310CAN1838287
 HF ALCATRAZ 60FCAN2043806 PV
 HF MAYFLOWER 191ZCAN1683163 PV
Sire **PENTIRE ROME R22NQDR22 PV**
 S A V PIONEER 7301USA15688392
 PENTIRE PRIDE H36NQDH36 SV
 PENTIRE PRIDE F35NQDF35

CONNEALY CAPITALIST 028 USA16752262
 LD CAPITALIST 316USA17666102 PV
 LD DIXIE ERICA 2053 USA14407230
Dam **BARANA RITA 2ND P008JXEP008 SV**
 KANSAS EVIDENTLY J81 NKLJ81 SV
 BARANA RITA M002JXEM002
 KANSAS RITA G225 NKLJG225

Purchaser: **Price:**

LOT 15

BARANA THORNTON T4 SV

A/c: Barana Pastoral

DOB 19/06/2022 **Colour** Black
Tattoo JXE22T4 **Age** 24



Comment:
 Bull with that bit of extra length & frame.

	Calving Ease DIR [%]	Calving Ease DTRS [%]	Birth Wt. [kg]	200 Day Wt [kg]	400 Day Wt [kg]	600 Day Wt [kg]	Milk [kg]	Scrotal Size [cm]	Carcase Wt [kg]	Eye Muscle Area [sq cm]	Rib Fat [mm]	Rump Fat [mm]	Retail Beef Yield [%]	IMF [%]
EBV	3.8	4.8	4.9	58	105	147	19	2.2	78	8.4	-0.9	0	1.2	0.6
Acc	60%	49%	80%	81%	79%	80%	71%	77%	67%	67%	67%	68%	58%	72%

MAY-WAY BREAKOUT 1310CAN1838287
 HF ALCATRAZ 60FCAN2043806 PV
 HF MAYFLOWER 191ZCAN1683163 PV
Sire **PENTIRE ROME R22NQDR22 PV**
 S A V PIONEER 7301USA15688392
 PENTIRE PRIDE H36NQDH36 SV
 PENTIRE PRIDE F35NQDF35

S A V 707 RITO 9969 USA16417285
 KANSAS JUDD J82NKLJ82 SV
 KANSAS LEAH E46 NKLE46
Dam **KANSAS DIANA L121NKLL121 SV**
 KANSAS CUSTER C58 NKLC58 SV
 KANSAS DIANA F146NKLK146
 KANSAS DIANA A16 NKLA16

Purchaser: **Price:**

LOT 16

BARANA TERENCE T26 SV

A/c: Barana Pastoral

DOB 11/10/2022 **Colour** Black
Tattoo JXE22T26 **Age** 20



Comment:
 Compact bull with smooth, early maturity muscle development.

	Calving Ease DIR [%]	Calving Ease DTRS [%]	Birth Wt. [kg]	200 Day Wt [kg]	400 Day Wt [kg]	600 Day Wt [kg]	Milk [kg]	Scrotal Size [cm]	Carcase Wt [kg]	Eye Muscle Area [sq cm]	Rib Fat [mm]	Rump Fat [mm]	Retail Beef Yield [%]	IMF [%]
EBV	5.6	5.3	4.3	50	90	123	21	1.6	71	13.4	-3.4	-5.8	2.4	0.3
Acc	59%	48%	79%	80%	77%	78%	69%	75%	65%	65%	65%	66%	55%	70%

MAY-WAY BREAKOUT 1310CAN1838287
 HF ALCATRAZ 60FCAN2043806 PV
 HF MAYFLOWER 191ZCAN1683163 PV
Sire **PENTIRE ROME R22NQDR22 PV**
 S A V PIONEER 7301USA15688392
 PENTIRE PRIDE H36NQDH36 SV
 PENTIRE PRIDE F35NQDF35

ASCOT HALLMARK H147 QQFH147 PV
 DALWHINNIE M70AGQM70 SV
 MILLAH MURRAH BRENDA F6 NMMF6 PV
Dam **BARANA JEDDA Q013JXEQ013**
 KANSAS DATALINK J63 NKLJ63 SV
 BARANA JEDDA M001JXEM001
 KANSAS JEDDA F191 NKLF191

Purchaser: **Price:**

LOT 17

BARANA TRENT T18 SV

A/c: Barana Pastoral

DOB 04/08/2022 **Colour** Black
Tattoo JXE22T18 **Age** 23



Comment:
 Medium framed bull. Well put together.
 Smooth muscle pattern.

	Calving Ease DIR [%]	Calving Ease DTRS [%]	Birth Wt. [kg]	200 Day Wt [kg]	400 Day Wt [kg]	600 Day Wt [kg]	Milk [kg]	Scrotal Size [cm]	Carcase Wt [kg]	Eye Muscle Area [sq cm]	Rib Fat [mm]	Rump Fat [mm]	Retail Beef Yield [%]	IMF [%]
EBV	-5	2.3	8.3	58	107	147	11	1.5	85	5.3	-2.1	-3.4	1.5	-1.4
Acc	59%	48%	79%	80%	78%	78%	69%	76%	66%	65%	65%	66%	56%	71%

Sire MAY-WAY BREAKOUT 1310CAN1838287
 HF ALCATRAZ 60FCAN2043806 PV
 HF MAYFLOWER 191ZCAN1683163 PV
PENTIRE ROME R22NQDR22 PV
 S A V PIONEER 7301USA15688392
 PENTIRE PRIDE H36NQDH36 SV
 PENTIRE PRIDE F35NQDF35

Dam ASCOT HALLMARK H147 QQFH147 PV
 DALWHINNIE M70AQGM70 SV
 MILLAH MURRAH BRENDA F6 NMMF6 PV
BARANA IVORY R3JXER3
 MUND00 CALYPSO C130 NWMC130 SV
 MUND00 IVORY G83NWMG83
 MUND00 IVORY D29 NWMMD29

Purchaser: **Price:**

LOT 18

WALLAWONG TORNADO T132 PV

A/c: Barana Pastoral

DOB 05/09/2022 **Colour** Black
Tattoo LEJ22T132 **Age** 22



Comment:
 Thickset, deep barrelled bull showing good carcass characteristics. Son of Millah Murrah Rembrandt R48PV.

	Calving Ease DIR [%]	Calving Ease DTRS [%]	Birth Wt. [kg]	200 Day Wt [kg]	400 Day Wt [kg]	600 Day Wt [kg]	Milk [kg]	Scrotal Size [cm]	Carcase Wt [kg]	Eye Muscle Area [sq cm]	Rib Fat [mm]	Rump Fat [mm]	Retail Beef Yield [%]	IMF [%]
EBV	5.5	4.1	3.1	49	90	116	18	3.4	64	8.1	1.2	0.6	0.4	3
Acc	59%	49%	73%	74%	72%	72%	63%	70%	62%	62%	63%	63%	56%	66%

Sire EF COMMANDO 1366USA17082311 PV
 MILLAH MURRAH PARATROOPER P15NMMMP15 PV
 MILLAH MURRAH ELA M9NMMMM9 PV
MILLAH MURRAH REMBRANDT R48NMMMR48 PV
 MILLAH MURRAH KINGDOM K35NMMK35 PV
 MILLAH MURRAH ABIGAIL N60NMMN60 PV
 MILLAH MURRAH ABIGAIL H150NMMH150 SV

Dam AYRVALE HERCULES H9 HIOH9 PV
 BURENDA LASSO L150QBUL150 SV
 BURENDA FLYCATCHER J372 QBUJ372
BURENDA EVE P117QBUP117 SV
 CHERYLTON STEWIE D19 WLHD19 PV
 BURENDA EVE M42QBUM42
 BURENDA EVE J39 QBUJ39

Purchaser: **Price:**

LOT 19

BARANA TYRONE T15 PV

A/c: Barana Pastoral

DOB 31/07/2022 **Colour** Black
Tattoo JXE22T15 **Age** 23



Comment:
 Bull showing excellent length of body. Medium frame.
 Silky, fine skin.

	Calving Ease DIR [%]	Calving Ease DTRS [%]	Birth Wt. [kg]	200 Day Wt [kg]	400 Day Wt [kg]	600 Day Wt [kg]	Milk [kg]	Scrotal Size [cm]	Carcase Wt [kg]	Eye Muscle Area [sq cm]	Rib Fat [mm]	Rump Fat [mm]	Retail Beef Yield [%]	IMF [%]
EBV	-6.7	4.6	8.5	45	84	115	12	2.7	59	9.2	-0.7	-1.5	1.8	0.4
Acc	60%	49%	80%	81%	79%	80%	71%	77%	68%	68%	67%	69%	59%	73%

Sire MAY-WAY BREAKOUT 1310CAN1838287
 HF ALCATRAZ 60FCAN2043806 PV
 HF MAYFLOWER 191ZCAN1683163 PV
PENTIRE ROME R22NQDR22 PV
 S A V PIONEER 7301USA15688392
 PENTIRE PRIDE H36NQDH36 SV
 PENTIRE PRIDE F35NQDF35

Dam KANSAS JUDD J82 NKLJ82 SV
 KANSAS JUDD L76NKL76 SV
 KANSAS RITA G225 NKLG225
BARANA GREEN N107JXEN107 SV
 UNKNOWN
 UNKNOWN

Purchaser: **Price:**

LOT 20

BARANA TALBOT T20 SV

A/c: Barana Pastoral

DOB 04/08/2022 **Colour** Black
Tattoo JXE22T20 **Age** 23



Comment:
 Bull displaying excellent length of body, deep barrel & mid maturity pattern.

	Calving Ease DIR [%]	Calving Ease DTRS [%]	Birth Wt. [kg]	200 Day Wt [kg]	400 Day Wt [kg]	600 Day Wt [kg]	Milk [kg]	Scrotal Size [cm]	Carcase Wt [kg]	Eye Muscle Area [sq cm]	Rib Fat [mm]	Rump Fat [mm]	Retail Beef Yield [%]	IMF [%]
EBV	-5.7	2.9	6.1	48	76	110	16	0.6	60	2.2	-0.3	-1.3	0.8	0.3
Acc	59%	48%	80%	80%	78%	79%	69%	76%	66%	65%	65%	66%	57%	70%

Sire MAY-WAY BREAKOUT 1310CAN1838287
 HF ALCATRAZ 60FCAN2043806 PV
 HF MAYFLOWER 191ZCAN1683163 PV
PENTIRE ROME R22NQDR22 PV
 S A V PIONEER 7301USA15688392
 PENTIRE PRIDE H36NQDH36 SV
 PENTIRE PRIDE F35NQDF35

Dam EARLEY DATELINE 2M CAN2M
 MUND00 CALYPSO C130NWMC130 SV
 MUND00 GOLLY Z107 NWMZ107
MUND00 IVORY G75NWMG75
 GLEN ISLAY TORONTO CAN22B
 MUND00 IVORY U41NWMU41
 MUND00 IVORY H8+88 NWMH8+88

Purchaser: **Price:**

LOT 21

BARANA TRUMAN T3 SV

A/c: Barana Pastoral

DOB 18/06/2022 **Colour** Black
Tattoo JXE22T3 **Age** 24



Comment:
 Bull displaying excellent length of body & mid-maturity muscle pattern.

	Calving Ease DIR [%]	Calving Ease DTRS [%]	Birth Wt. [kg]	200 Day Wt [kg]	400 Day Wt [kg]	600 Day Wt [kg]	Milk [kg]	Scrotal Size [cm]	Carcase Wt [kg]	Eye Muscle Area [sq cm]	Rib Fat [mm]	Rump Fat [mm]	Retail Beef Yield [%]	IMF [%]
EBV	1	2.6	6.1	59	108	149	21	3.2	87	8.6	-2.2	-1.1	1.2	0
Acc	60%	49%	80%	81%	78%	79%	69%	76%	66%	66%	66%	67%	57%	71%

Sire MAY-WAY BREAKOUT 1310CAN1838287
 HF ALCATRAZ 60FCAN2043806 PV
 HF MAYFLOWER 191ZCAN1683163 PV
PENTIRE ROME R22NQDR22 PV
 S A V PIONEER 7301USA15688392
 PENTIRE PRIDE H36NQDH36 SV
 PENTIRE PRIDE F35NQDF35

Dam ASCOT HALLMARK H147 QQFH147 PV
 DALWHINNIE M70AGQM70 SV
 MILLAH MURRAH BRENDA F6 NMMF6 PV
BARANA IVORY Q005JXEQ005
 MUNDOO CALYPSO C130 NWMC130 SV
 MUNDOO IVORY G83NWMG83
 MUNDOO IVORY D29 NWMMD29

Purchaser: **Price:**

LOT 22

BARANA TYLER T24 SV

A/c: Barana Pastoral

DOB 17/08/2022 **Colour** Black
Tattoo JXE22T24 **Age** 22



Comment:
 Compact, early maturing bull with good carcass characteristics.

	Calving Ease DIR [%]	Calving Ease DTRS [%]	Birth Wt. [kg]	200 Day Wt [kg]	400 Day Wt [kg]	600 Day Wt [kg]	Milk [kg]	Scrotal Size [cm]	Carcase Wt [kg]	Eye Muscle Area [sq cm]	Rib Fat [mm]	Rump Fat [mm]	Retail Beef Yield [%]	IMF [%]
EBV	4.4	3.9	5	53	95	127	19	2.3	72	7.9	-1.2	-2	1	1.3
Acc	51%	42%	63%	66%	63%	64%	55%	60%	54%	54%	56%	56%	49%	59%

Sire MAY-WAY BREAKOUT 1310CAN1838287
 HF ALCATRAZ 60FCAN2043806 PV
 HF MAYFLOWER 191ZCAN1683163 PV
PENTIRE ROME R22NQDR22 PV
 S A V PIONEER 7301USA15688392
 PENTIRE PRIDE H36NQDH36 SV
 PENTIRE PRIDE F35NQDF35

Dam ASCOT HALLMARK H147 QQFH147 PV
 DALWHINNIE M70AGQM70 SV
 MILLAH MURRAH BRENDA F6 NMMF6 PV
BARANA RITA R12JXR12
 LD CAPITALIST 316 USA17666102 PV
 BARANA RITA 2ND P008JXEP008 SV
 BARANA RITA M002 JXEM002

Purchaser: **Price:**

LOT 23

BARANA TRISTAN T28 SV

A/c: Barana Pastoral

DOB 07/12/2022 **Colour** Black
Tattoo JXE22T28 **Age** 18



Comment:
 Younger bull showing good carcass characteristics & an early to mid maturity muscle pattern.

	Calving Ease DIR [%]	Calving Ease DTRS [%]	Birth Wt. [kg]	200 Day Wt [kg]	400 Day Wt [kg]	600 Day Wt [kg]	Milk [kg]	Scrotal Size [cm]	Carcase Wt [kg]	Eye Muscle Area [sq cm]	Rib Fat [mm]	Rump Fat [mm]	Retail Beef Yield [%]	IMF [%]
EBV	4.7	4.9	5.7	56	90	119	16	3.2	69	7	-0.3	0.3	0.6	2.5
Acc	58%	47%	79%	80%	77%	78%	68%	75%	66%	65%	65%	66%	57%	70%

Sire MAY-WAY BREAKOUT 1310CAN1838287
 HF ALCATRAZ 60FCAN2043806 PV
 HF MAYFLOWER 191ZCAN1683163 PV
PENTIRE ROME R22NQDR22 PV
 S A V PIONEER 7301USA15688392
 PENTIRE PRIDE H36NQDH36 SV
 PENTIRE PRIDE F35NQDF35

Dam KANSAS JUDD J82 NKJLJ82 SV
 KANSAS JUDD L76NKLL76 SV
 KANSAS RITA G225 NKLJG225
BARANA JEDDA N5JXEN5 NA
 THE GRANGE WHEEL WRIGHT D6 EFTD6 PV
 KANSAS JEDDA F191NKLF191
 KANSAS JEDDA Y108 NKLY108

Purchaser: **Price:**

LOT 24

WONGALEA BIG T P

A/c: COURTNEY PALMER

DOB 14/04/2022 **Eye Pigment** 100/100
Tattoo ZWCP T002 **Age** 26

Colour Red
Comment:
 Medium framed, well muscled bull with a good temperament.

	CE	BW	WW	YW	Milk	MCE	MWWT	STAY	DOC	CW	REA	FAT	MARB
EPD	3.8	8	82.1	118.8	30.3	4.8	71.4	11.5	7	23.6	0.73	-0.115	0.12
ACC	0.13	0.18	0.18	0.15	0.19	0.07	0.19	0.08	0.08	0.14	0.12	0.09	0.11
PRK	70	95	15	15	25	35	15	80	80	35	65	55	5

Sire BARANA EMOTION PTCPE059
 BARANA JURYMAN PTCPJ057
 BARANA EVATT PTCPE165
BARANA LINDEL PTCPL053
 BARANA ECHUCA PTCPE024
 BARANA GEMSTONE G112 PTCPG112
 BREWERS HEIDI X316 DBBPX316+02

Dam RU-DEV BRAAM PEDBX3478
 BAR 5 SA BURNER 825R IMCPA825
 SIMLEE MARYNA PEDBX3394
WONGALEA JENNA ZWCPJ001
 GOWRIE YANKEE MOBPY004+03
 BARANA DORA PTCPD094
 BARANA XCLOSE PTCPX109+02

Purchaser: **Price:**

LOT 25

BARANA TONY [P]
A/c: BARANA PASTORAL

DOB 03/11/2022 **Eye Pigment** 100/100
Tattoo PTCP T121 **Age** 20
Colour Dark Tan

Comment:
Younger bull showing a lot of promise. Thickset, tremendous body mass & stands wide behind.



WOONALLEE BHR TORNADO WEEPC120
WOONALLEE JERICO WEEPJ092
WOONALLEE VASTI C87 WEEPC087
Sire **WILLANDRA QANTASTIC AJYPQ094**
UNKNOWN
WILLANDRA EVITA G116 AJYPG116
WILLANDRA EVITA E105 AJYPE105

WOONALLEE JUMBO WEEPJ065
BARANA MUHAMMAD PTCPM072
BARANA ELDERSLIE PTCPE148
Dam **BARANA PAISLEY 2ND PTCPP049**
CALLENDALE JASPER ALUPJ008
BARANA MIRIAM PTCPM014
BARANA GAYE PTCPG033

Purchaser: **Price:**

LOT 27

BARANA UNREGISTERED [H]
A/c: BARANA PASTORAL

DOB 11/10/2022 **Eye Pigment** 100/100
Tattoo PTCP T113 **Age** 20
Colour Dark Tan

Comment:
Young bull with tremendous jump muscle, deep, thickset low thigh & very strong carcase characteristics.



Sire **WILLANDRA PANAMA AJYPP164 [P]** **Dam** **PTCPP089**

Purchaser: **Price:**

LOT 26

BARANA TAIT [P]
A/c: BARANA PASTORAL

DOB 02/09/2022 **Eye Pigment** 100/100
Tattoo PTCP T092 **Age** 22
Colour Dark Red

Comment:
A bull displaying extra length of body, soft, fine skin & early to mid muscle development.



	CE	BW	WW	YW	Milk	MCE	MWWT	STAY	DOC	CW	REA	FAT	MARB
EPD	4.7	5.7	70.7	94.4	25.6	5.5	61	13.5	7.6	27.4	0.85	-0.109	0.12
ACC	0.34	0.37	0.39	0.38	0.17	0.15	0.24	0.25	0.05	0.33	0.3	0.25	0.32
PRK	55	50	55	70	60	25	60	50	70	20	30	40	5

WOONALLEE FLAMBOYANT WEEPF009
TOPWEIGHT JACK ARTA TOPPJ133
TOPWEIGHT BETTINA 333 TOPPB048
Sire **WILLANDRA PANAMA AJYPP164**
MAJ ROBO SDMPX039+02
WILLANDRA OLIVE B70 AJYPB070
QUAINDERING OLIVE V19 AJYPV019+00

SHAWACRES NACOBI IMCPY032+03
BULLOCKHILLS BUSTER ERPPB011
BULLOCKHILLS ERP P U4 ERPPU004+99
Dam **BARANA FERNANDA PTCPP016**
VINTAGE MAVERICK WSRPV137+00
BARANA YELENA PTCPY022+03
BARANA ROBERTA PTCPR015+96

Purchaser: **Price:**

LOT 28

BARANA TOUCAN [P]
A/c: BARANA PASTORAL

DOB 07/10/2022 **Eye Pigment** 100/100
Tattoo PTCP T111 **Age** 20
Colour Light Red

Comment:
A bull with that strong, sirey head. Stands on good bone. Excellent length & muscle development.



	CE	BW	WW	YW	Milk	MCE	MWWT	STAY	DOC	CW	REA	FAT	MARB
EPD	6.7	4.4	60.4	78.8	23.2	5.1	53.4	12.1	8.4	3.9	0.8	-0.121	-0.09
ACC	0.34	0.44	0.36	0.36	0.29	0.14	0.31	0.25	0.04	0.32	0.3	0.27	0.31
PRK	30	25	95	95	75	30	90	70	55	100	45	75	50

WOONALLEE FLAMBOYANT WEEPF009
TOPWEIGHT JACK ARTA TOPPJ133
TOPWEIGHT BETTINA 333 TOPPB048
Sire **WILLANDRA PANAMA AJYPP164**
MAJ ROBO SDMPX039+02
WILLANDRA OLIVE B70 AJYPB070
QUAINDERING OLIVE V19 AJYPV019+00

WATERFRONT DURHAM-D49 HRHPD049
WATERFRONT FABIAN-F72 HRHPF072
LANGTON-GATE PA039 LGPPA039
Dam **BARANA JASMINE 2ND PTCPJ080**
VINTAGE MAVERICK WSRPV137+00
BARANA YONDER PTCPY053+03
BARANA VELVET PTCPV008+00

Purchaser: **Price:**

LOT 29

BARANA UNREGISTERED [P]
A/c: BARANA PASTORAL

DOB 08/08/2022 **Eye Pigment** 100/100
Tattoo PTCP T078 **Age** 22
Colour Dark Red
Comment:
 Compact, thickset, early maturing type of bull.



Sire WORMBETE ROMEO R8 AGOPR008 [P] **Dam** PTCPR051

Purchaser: **Price:**

LOT 30

BARANA TENNESSEE [P]
A/c: BARANA PASTORAL

DOB 30/08/2022 **Eye Pigment** 100/100
Tattoo PTCP T090 **Age** 22
Colour Dark Tan
Comment:
 Would recommend this bull for heifers.
 Compact, smooth muscle pattern.



Sire WORMBETE ROMEO R8 AGOPR008 **Dam** BARANA RILEY R082 PTCPR082

Purchaser: **Price:**

BARANA JURYMAN PTCPJ057
 BARANA LINDEL PTCPL053
 BARANA GEMSTONE G112 PTCPG112
 TENNYSONVALE HUGO BXNPH110
 BARANA LILYVALE PTCPL069
 BARANA ADELINE PTCPA080

	CE	BW	WW	YW	Milk	MCE	MWWT	STAY	DOC	CW	REA	FAT	MARB
EPD	6.8	4.2	65.3	91.2	29.4	5.5	62.1	14.1	9	26.2	0.87	-0.114	0.05
ACC	0.17	0.17	0.18	0.17	0.07	0.09	0.11	0.13	0.1	0.15	0.15	0.13	0.15
PRK	30	20	80	80	30	25	55	45	50	25	25	55	10

FGAF SELDOM 835L PEDPX1368
 FGAF GUERRERO 810Y IMCPG810
 NOSSATERRA REAL WISH 69U PEDPX1931
 WORMBETE BELLE P182 AGOPP182
 WORMBETE BELLE H55 AGOPH055

LOT 31

BARANA TENTERFIELD [P]
A/c: BARANA PASTORAL

DOB 19/09/2022 **Eye Pigment** 100/100
Tattoo PTCP T099 **Age** 21
Colour Dark Red
Comment:
 Would recommend this bull for heifers. Well put together bull with a smooth muscle pattern.



Sire WORMBETE ROMEO R8 AGOPR008 **Dam** BARANA ROXY R089 PTCPR089

Purchaser: **Price:**

FGAF SELDOM 835L PEDPX1368
 FGAF GUERRERO 810Y IMCPG810
 NOSSATERRA REAL WISH 69U PEDPX1931
 WORMBETE BELLE P182 AGOPP182
 WORMBETE BELLE H55 AGOPH055

WILLANDRA GOMEZ AJYPG041
 WOONALLEE LOOKING GLASS WEEPL105
 WOONALLEE VASTI G52 WEEPG052
 WATERFRONT FABIAN-F72 HRHPF072
 BARANA JASMINE 2ND PTCPJ080
 BARANA YONDER PTCPY053+03

	CE	BW	WW	YW	Milk	MCE	MWWT	STAY	DOC	CW	REA	FAT	MARB
EPD	6.1	4.3	69.3	97.7	30.3	3.7	65	15.2	10.6	9.8	0.91	-0.12	-0.25
ACC	0.33	0.42	0.4	0.38	0.14	0.14	0.23	0.25	0.1	0.31	0.3	0.27	0.32
PRK	40	20	65	60	25	55	40	30	30	95	20	70	95

LOT 32

BARANA UMINA U37 [PP]
A/c: BARANA PASTORAL

DOB 07/08/2023 **Eye Pigment** 100/100
Tattoo PTCP U037 **Age** 10
Colour Red
Comment:
 Homozygous polled. Excellent type of female showing all the Simmental characteristics; length, depth, width but still refined. Her dam is breeding well. Unjoined.



Sire WORMBETE SEBASTIAN S118 AGOPS118 **Dam** BARANA RUBY R030 PTCPR030

Purchaser: **Price:**

PHS BANK ROLL 345B IMCPK345
 WORMBETE PRIME MINISTER P22 AGOPP022
 WORMBETE JUDY L17 AGOPL017
 WORMBETE MISHKA P132 AGOPP132
 WORMBETE MISHKA K57 AGOPK057

WILLANDRA GOMEZ AJYPG041
 WOONALLEE LOOKING GLASS WEEPL105
 WOONALLEE VASTI G52 WEEPG052
 BARANA ECHUCA PTCPE024
 BARANA GERALDENE PTCPG107
 BENARBA XDANCER TRTPX048+02

	CE	BW	WW	YW	Milk	MCE	MWWT	STAY	DOC	CW	REA	FAT	MARB
EPD	-0.4	8.4	80.9	112.3	26.1	0.1	66.6	12.5	10.4	30.8	0.66	-0.13	-0.45
ACC	0.3	0.34	0.32	0.33	0.04	0.11	0.13	0.24	0.11	0.28	0.29	0.23	0.28
PRK	100	100	20	25	55	95	30	65	30	15	85	90	100

LOT 33

BARANA U-TURN U43 [P]
A/c: BARANA PASTORAL

DOB 08/08/2023 **Eye Pigment** 100/100
Tattoo PTC3 U043 **Age** 10

Colour Blonde

Comment:
Outstanding young heifer. One we should be retaining but offering some of our best heifers. Medium framed, well put-together, stands square behind. Soft, fine skin. Unjoined.



	CE	BW	WW	YW	Milk	MCE	MWWT	STAY	DOC	CW	REA	FAT	MARB
EPD	5.8	5.7	75.8	98.6	25.9	5	63.8	15.2	7.7	22.9	0.9	-0.109	-0.13
ACC	0.17	0.18	0.18	0.18	0.07	0.08	0.11	0.13	0.03	0.16	0.15	0.13	0.15
PRK	40	50	35	60	60	30	45	30	70	40	20	40	65

PHS BANK ROLL 345B IMCPK345
WORMBETE PRIME MINISTER P22 AGOPP022
WORMBETE JUDY L17 AGOPL017
Sire **WORMBETE SEBASTIAN S118 AGOPS118**
WOONALLEE LAS VEGAS WEEPL128
WORMBETE MISHKA P132 AGOPP132
WORMBETE MISHKA K57 AGOPK057

WOONALLEE JUMBO (P)(AI) WEEPJ065
BARANA P011 II (H) PTC1P011
BARANA G042 (H) PTC0G042
Dam **BARANA RHIANNON R013 PTC2R013**
BULLOCKHILLS BUSTER (P)(AI) ERPPB011
BARANA EVA 2ND (P) PTCPE034
BARANA BERNADETTE (P) PTCPB109

Purchaser:

Price:

LOT 34

BARANA URSULA U10 [PP]
A/c: BARANA PASTORAL

DOB 15/08/2023 **Eye Pigment** 100/100
Tattoo PTCU U107 **Age** 10

Colour Dark Tan

Comment:
Homozygous polled. Standout young heifer. Hard to fault. This deep barrelled, thickset, wide, easy-doing heifer will make a good bull breeding female. Unjoined.



	CE	BW	WW	YW	Milk	MCE	MWWT	STAY	DOC	CW	REA	FAT	MARB
EPD	5.5	5.2	72.7	103.9	26	3.3	62.4	16	9.1	20.1	0.81	-0.098	-0.02
ACC	0.33	0.35	0.35	0.35	0.09	0.13	0.18	0.24	0.09	0.31	0.27	0.23	0.27
PRK	45	40	45	45	55	60	55	20	45	55	40	15	25

WOONALLEE FLAMBOYANT WEEPFO09
TOPWEIGHT JACK ARTA TOPPJ133
TOPWEIGHT BETTINA 333 TOPPB048
Sire **WILLANDRA PANAMA AJYPP164**
MAJ ROBO SDMPX039+02
WILLANDRA OLIVE B70 AJYPB070
QUAINDERING OLIVE V19 AJYPV019+00

CHAMPS BRAVO IMCPD060
WOONALLEE JUMBO WEEPJ065
WOONALLEE KATHIE G73 WEEPG073
Dam **BARANA PRESCOTT PTCPP043**
BANDEEKA POLL COSSACK LGKPC734
BARANA FLANNEL PTCPF087
BARANA BERANGER PTCPB154

Purchaser:

Price:

LOT 35

BARANA URUNGA [PP]
A/c: BARANA PASTORAL

DOB 06/08/2023 **Eye Pigment** 100/100
Tattoo PTCU U031 **Age** 10

Colour Red

Comment:
Homozygous polled. Excellent length. Soft, fine hair type. Moderately framed. Unjoined.



	CE	BW	WW	YW	Milk	MCE	MWWT	STAY	DOC	CW	REA	FAT	MARB
EPD	8.3	4.3	67.9	96.8	30	6.3	64	13.7	8.6	17.7	0.66	-0.123	0.08
ACC	0.17	0.18	0.18	0.18	0.1	0.09	0.13	0.13	0.1	0.15	0.15	0.13	0.16
PRK	15	20	70	65	30	15	45	50	55	65	85	80	10

PHS BANK ROLL 345B IMCPK345
WORMBETE PRIME MINISTER P22 AGOPP022
WORMBETE JUDY L17 AGOPL017
Sire **WORMBETE SEBASTIAN S118 AGOPS118**
WOONALLEE LAS VEGAS WEEPL128
WORMBETE MISHKA P132 AGOPP132
WORMBETE MISHKA K57 AGOPK057

BARANA JURYMAN PTCPJ057
BARANA LINDEL PTCPL053
BARANA GEMSTONE G112 PTCPG112
Dam **BARANA RENAE R054 PTCPR054**
BULLOCKHILLS BUSTER ERPPB011
BARANA FOREVER PTCPF045
BARANA COMPASSION PTCPC018

Purchaser:

Price:

LOT 36

BARANA ULANA U47 [PP]
A/c: BARANA PASTORAL

DOB 13/08/2023 **Eye Pigment** 100/100
Tattoo PTCU U047 **Age** 10

Colour Red

Comment:
Homozygous polled. Heifer's first calf - she did a great job rearing the calf. Length of body, functionality & outlook are all features of this heifer.



	CE	BW	WW	YW	Milk	MCE	MWWT	STAY	DOC	CW	REA	FAT	MARB
EPD	5.5	1.2	56.3	74.6	31.9	3.9	60.1	16.9	10.1	28.4	1.08	-0.138	-0.26
ACC	0.33	0.34	0.33	0.34	0.07	0.14	0.16	0.24	0.15	0.3	0.27	0.26	0.26
PRK	45	3	100	100	15	50	65	15	35	20	3	100	95

FGAF SELDOM 835L PEDPX1368
FGAF GUERRERO 810Y IMCPG810
NOSSATERRA REAL WISH 69U PEDPX1931
Sire **WORMBETE ROMEO R8 AGOPR008**
WOONALLEE LAS VEGAS WEEPL128
WORMBETE BELLE P182 AGOPP182
WORMBETE BELLE H55 AGOPH055

WILLANDRA GOMEZ AJYPG041
WOONALLEE LOOKING GLASS WEEPL105
WOONALLEE VASTI G52 WEEPG052
Dam **BARANA SUE PTCPS010**
DOUBLE BAR D MADDOX 40S IMCPB040
BARANA EDNA PTCPE105
BARANA VANILLA PTCPV026+00

Purchaser:

Price:

LOT 37

BARANA UPSTART U085 [P]
A/c: BARANA PASTORAL

DOB 19/10/2023 **Eye Pigment** 100/100
Tattoo PTCP U085 **Age** 8

Colour Tan

Comment:
Stands on medium frame. Well structured, soft, easy-doing young heifer out of a good breeding cow. Unjoined.



	CE	BW	WW	YW	Milk	MCE	MWWT	STAY	DOC	CW	REA	FAT	MARB
EPD	4.7	3.9	60.6	75.6	25.4	3.6	55.7	16.9	8.3	5.1	0.5	-0.117	-0.2
ACC	0.33	0.35	0.34	0.34	0.08	0.12	0.17	0.25	0.09	0.32	0.3	0.27	0.3
PRK	55	15	90	100	60	55	85	15	60	100	100	65	85

WOONALLEE FLAMBOYANT WEEPF009
TOPWEIGHT JACK ARTA TOPPJ133
TOPWEIGHT BETTINA 333 TOPPB048
Sire **WILLANDRA PANAMA AJYPP164**
MAJ ROBO SDMPX039+02
WILLANDRA OLIVE B70 AJYPB070
QUAINDERING OLIVE V19 AJYPV019+00

WILLANDRA GOMEZ AJYPG041
WOONALLEE LOOKING GLASS WEEPL105
WOONALLEE VASTI G52 WEEPG052
Dam **BARANA PAULA PTCPP109**
BAR 5 P SA EVOLUTION 418S IMCPB418
BARANA EVETTA PTCPE088
BARANA XTENT PTCPX107+02

Purchaser:

Price:

LOT 38

BARANA URANQUINTY [P]
A/c: BARANA PASTORAL

DOB 17/07/2023 **Eye Pigment** 100/0
Tattoo PTCP U006 **Age** 11

Colour Red

Comment:
Moderately framed. A very attractive & functional heifer. Stands wide behind. Unjoined.



	CE	BW	WW	YW	Milk	MCE	MWWT	STAY	DOC	CW	REA	FAT	MARB
EPD	7.6	3.3	62.7	80.3	20.7	5	52.1	16.8	8.8	7.5	0.76	-0.115	-0.07
ACC	0.17	0.19	0.19	0.18	0.08	0.09	0.12	0.13	0.03	0.2	0.2	0.13	0.16
PRK	25	10	90	95	90	30	95	15	50	95	55	60	45

FGAF SELDOM 835L PEDPX1368
FGAF GUERRERO 810Y IMCPG810
NOSSATERRA REAL WISH 69U PEDPX1931
Sire **WORMBETE ROMEO R8 AGOPR008**
WOONALLEE LAS VEGAS WEEPL128
WORMBETE BELLE P182 AGOPP182
WORMBETE BELLE H55 AGOPH055

TOPWEIGHT JACK ARTA TOPPJ133
WILLANDRA PANAMA AJYPP164
WILLANDRA OLIVE B70 AJYPB070
Dam **BARANA SCARLETT PTCPS016**
TENNYSONVALE HUGO BXNPH110
BARANA LOUTH PTCPL077
BARANA XIT PTCPX105+02

Purchaser:

Price:

LOT 39

BARANA ULLADULLA [H]
A/c: BARANA PASTORAL

DOB 07/09/2023 **Eye Pigment** 100/90
Tattoo PTCP U063 **Age** 9

Colour Red

Comment:
A female with a good combination of muscularity & softness. Unjoined.



	CE	BW	WW	YW	Milk	MCE	MWWT	STAY	DOC	CW	REA	FAT	MARB
EPD	6.8	4.4	69.3	96.1	30.4	3.3	65.1	12.2	9.3	16	0.88	-0.115	-0.2
ACC	0.17	0.17	0.17	0.18	0.08	0.1	0.11	0.13	0.11	0.15	0.15	0.13	0.15
PRK	30	25	65	65	25	60	40	70	45	70	25	60	85

WOONALLEE FLAMBOYANT WEEPF009
TOPWEIGHT JACK ARTA TOPPJ133
TOPWEIGHT BETTINA 333 TOPPB048
Sire **WILLANDRA PANAMA AJYPP164**
MAJ ROBO SDMPX039+02
WILLANDRA OLIVE B70 AJYPB070
QUAINDERING OLIVE V19 AJYPV019+00

CHAMPS BRAVO IMCPD060
WOONALLEE JUMBO WEEPJ065
WOONALLEE KATHIE G73 WEEPG073
Dam **BARANA QUINTESSA Q045 PTCQ045**
WATERFRONT FABIAN-F72 HRHPF072
BARANA KIPHLER PTCPK104
BARANA HALLA PTCPH017

Purchaser:

Price:

LOT 40

BARANA UKULELE U68 [P]
A/c: BARANA PASTORAL

DOB 29/09/2023 **Eye Pigment** 100/100
Tattoo PTCP U068 **Age** 9

Colour Tan

Comment:
Last of the heifers. Easy-doing, early maturing heifer. Dam is breeding well. Unjoined.



	CE	BW	WW	YW	Milk	MCE	MWWT	STAY	DOC	CW	REA	FAT	MARB
EPD	7.7	3.3	56.5	75.4	24.5	5.4	52.8	12.5	8.2	23.9	1.06	-0.105	-0.16
ACC	0.33	0.35	0.35	0.36	0.1	0.14	0.18	0.23	0.05	0.31	0.26	0.27	0.27
PRK	20	10	100	100	70	25	95	65	60	35	3	30	75

WOONALLEE FLAMBOYANT WEEPF009
TOPWEIGHT JACK ARTA TOPPJ133
TOPWEIGHT BETTINA 333 TOPPB048
Sire **WILLANDRA PANAMA AJYPP164**
MAJ ROBO SDMPX039+02
WILLANDRA OLIVE B70 AJYPB070
QUAINDERING OLIVE V19 AJYPV019+00

CHAMPS BRAVO IMCPD060
WOONALLEE JUMBO WEEPJ065
WOONALLEE KATHIE G73 WEEPG073
Dam **BARANA P099 PTCPP099**
BARANA EMOTION PTCPE059
BARANA KIM 2ND PTCPK102
BARANA BLYTHE PTCPB019

Purchaser:

Price:

LOT 41

**BARANA 5 X PUREBRED COMMERCIAL
SIMMENTAL PTIC COWS 2-4 YEARS OLD**

A/c: BARANA PASTORAL

Purchaser:

Price:



LOT 42

**BARANA 5 X PUREBRED COMMERCIAL
SIMMENTAL UNJOINED HEIFERS**

A/c: BARANA PASTORAL

Purchaser:

Price:



See digital catalogue & sign up for our newsletter at www.baranasimmentals.com

LOT 43

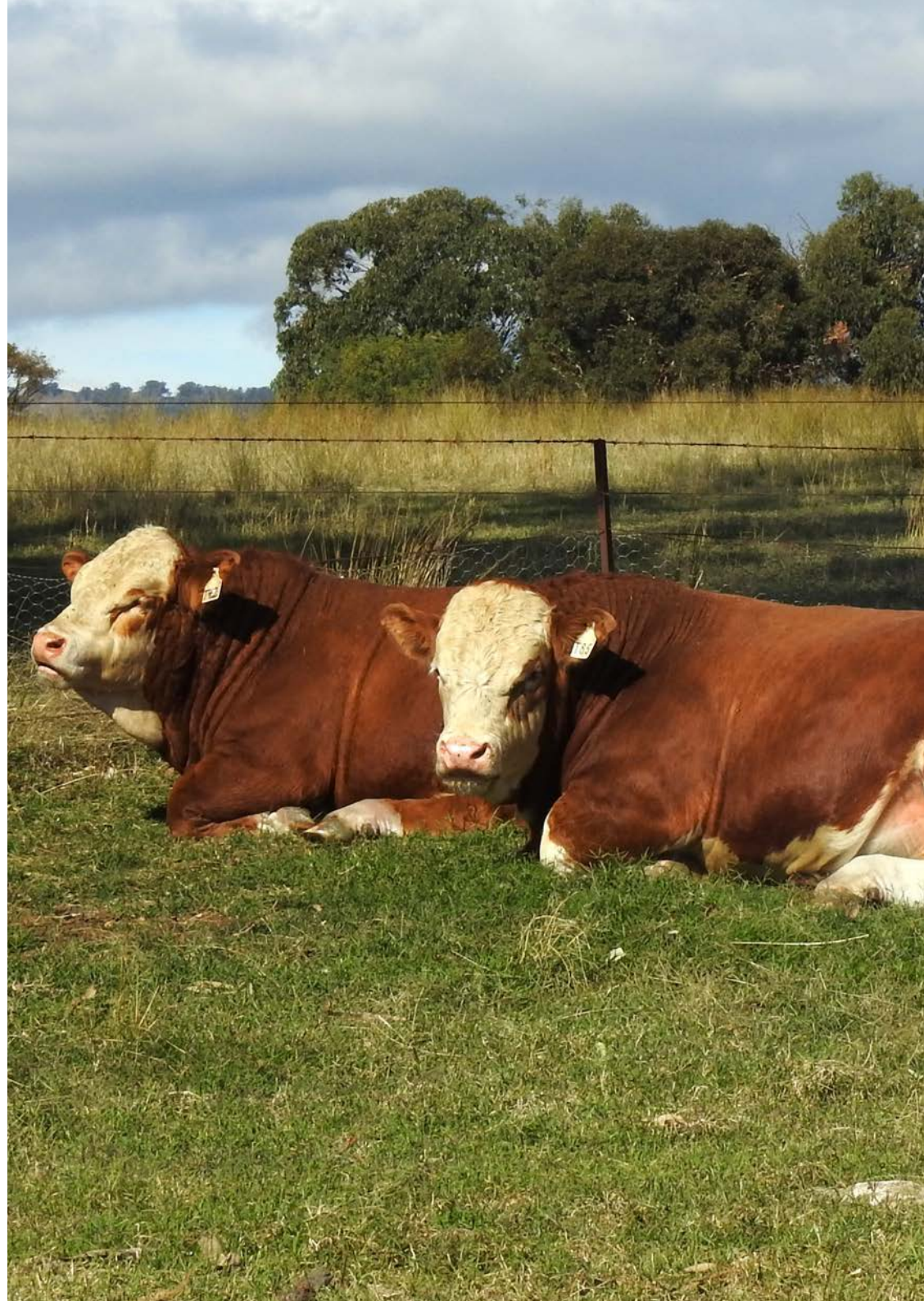
**BARANA 5 X PUREBRED COMMERCIAL
SIMMENTAL UNJOINED HEIFERS**

A/c: BARANA PASTORAL

Purchaser:

Price:







LOT 3 BARANA TRENT PTCPT085 [P]



LOT 5 BARANA TANNER PTCPT042 [P]



LOT 6 BARANA UNREGISTERED PTCPT028 [P]



LOT 8 BARANA UNREGISTERED PTCPT109 [P]



LOT 12 BARANA TOWNSEND T2 SV JXE22T2



LOT 20 BARANA TALBOT T20 SV JXE22T20

BARANA

Peter Cook
0427 775 233

baranasimmentals.com
barana@bigpond.com



Gunnedah | Nik Hannaford 0417 201 460
Tamworth | Brian Kennedy 0427 844 047
Dubbo | Paul Jameson 0428 667 998
Gunnedah | Hugh Shannon 0437 885 032
Gunnedah | John Glover 0428 486 887



Luke Scicluna 0428 421 828
Tom Tanner 0448 462 177
Paul Banks 0427 922 700